

Portland, OR

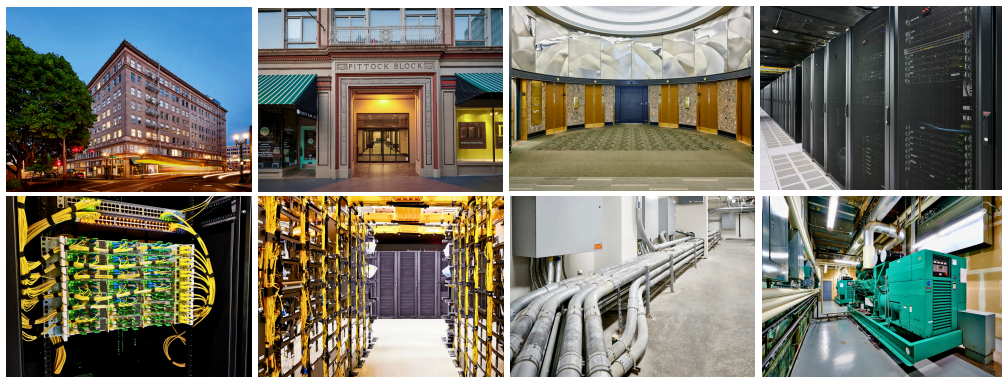
921 SW Washington St

WHY PITTOCK BLOCK?

The Pittock Block, a historic landmark in downtown Portland owned and operated by 1547, has transformed into a critical hub for global connectivity. Widely recognized as one of the most network-dense carrier hotels in the Pacific Northwest and a premier regional Internet Exchange Point (IXP), the Pittock Block's strategic location and robust infrastructure make it the ideal data center choice for companies seeking reliable, high-speed, and low-latency connectivity to key U.S. and global markets.

Discover the Benefits of Portland's Premier Carrier Hotel

- Home to 16 fiber optic carriers, the Pittock Block ensures diverse and resilient network paths for optimal performance.
- Connect with over 170+ service providers, offering a broad range of services and solutions tailored to your needs.
- Seven subsea cable terminations provide direct links to the Asia-Pacific market, facilitating seamless international communication and data transfer.
- Benefit from low latency to all major U.S. markets, enhancing the speed and reliability of your network connections.
- Leverage high-speed physical cross-connects to AWS services via the Pittock Block's AWS Direct Connect node for efficient cloud integration and improved performance.



FACILITY SPECIFICATIONS

PROPERTY/DATA CENTER

- ✓ 8-story, 302,262 sq. ft. building located in downtown Portland
- ✓ 120,000 sq. ft. data center space
- ✓ Multiple Points of Entry from each corner of the property for true diverse outside plant fiber
- ✓ Reinforced concrete with brick exterior
- ✓ Built in 1913 and renovated in 2001, 2021, with ongoing development to accommodate new capacity

POWER

- ✓ 8 MW capacity
- ✓ On-site power generation
- ✓ 100% underground distribution
- ✓ 5 on-site generators providing 7 MW of backup power
- ✓ N+1 UPS Redundancy
- ✓ Total 2 MW critical IT load



INTERCONNECTION AT THE PITTOCK BLOCK

- Accurate Automation
- Akamai Technologies
- Alaska Communications
- Allstream
- Althea
- Alyrica Networks
- Amazon Web Services (AWS)
- American Digital Online
- AT&T
- Atmosera
- BendTel
- Boulevard Media
- Broadwing
- Cascade Divide
- Cascade Technology Alliance
- Century Link
- Charter
- City of Portland
- City of Sandy
- Clear Channel
- Cogent Communications
- Comcast
- CTS
- DirectLink
- Douglas Fast Net
- Fibersphere Communications
- FiberXStream
- Freewire Broadband
- Global Data Link
- Google
- Gorge Networks
- Hawk Networks
- Helio Broadband
- Hurricane Electric
- LightPoint
- LS Networks
- Lumen
- McLeodUSA
- Metrocall
- Momentum
- MOX Networks
- Network for Education and Research in Oregon (NERO)
- NoaNet
- Northstate Communications
- Northwest Fiber Network
- NWAX
- On-Fiber Communications
- Online Northwest
- Oregon Link
- Origin Networks
- Pacific Telecom
- PacketFabric
- PDXHosting
- PEAK Internet
- Pocketinet Communications
- Portland Internet Hosting
- Portland Internetworks
- Quick Internet
- Rainier Connect
- Real Internet Solutions
- Reflex Communications
- ScaleEngine
- Sheerwood Broadband
- SilverIP
- Silverstar Telecom
- Smarsh
- Spectrum
- State of Oregon
- Stephouse Networks
- Sterling Communications
- Syringa Networks
- Tata Communications
- TDS Telecom
- Telecom
- Teleport Internet Services
- Telia
- Telserv
- Teltrust
- TW Telecom
- Verio
- Verizon
- Voice Connection
- Washington Broadband
- Wave Broadband
- WCI
- Western Independent Network
- Windstream
- Windwave
- Wtechlink
- Zayo
- Ziply



CONNECTIVITY

- ✓ Comprehensive interconnection ecosystem
- ✓ 179 service providers
- ✓ 16 fiber optic carriers
- ✓ Access to multiple subsea cable systems
- ✓ Connectivity and access to key U.S. and global markets, including the Asia-Pacific market



SECURITY

- ✓ Centrally located security desk with 24x7x365 manned security
- ✓ Turnstile and elevator access to data centers
- ✓ Limited badge-restricted access to all data center floors/data center suites
- ✓ Biometric access points to throughout data center floors/data center suites
- ✓ Video surveillance coverage throughout the facility

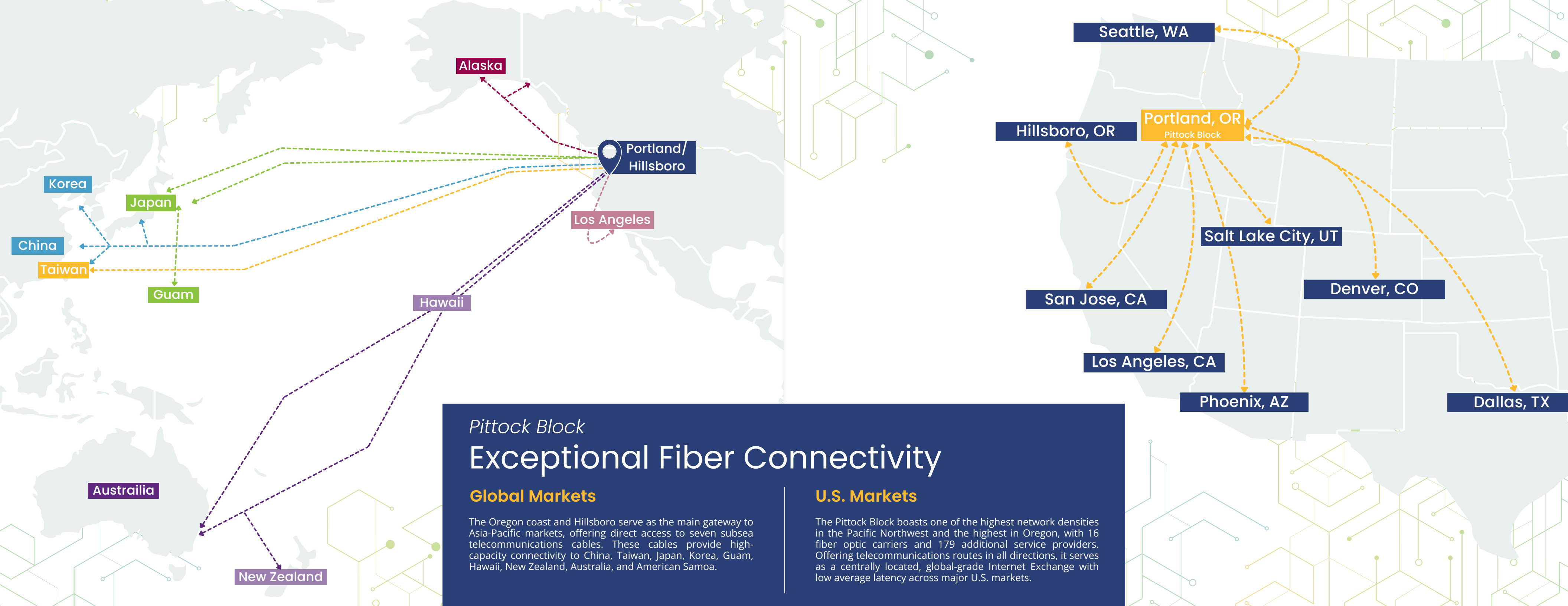
About fifteenfortyseven Critical Systems Realty ("1547")

fifteenfortyseven Critical Systems Realty ("1547") is a leading developer, operator, and owner of highly interconnected, custom-designed data centers with over 1.25 million square feet of data center space under management throughout North America and Europe. 1547 selects sites, designs facilities, and manages developments to optimize returns for all stakeholders across new and interconnected properties. With interconnection in the company's DNA, 1547's connectivity-focused portfolio of data centers includes carrier hotels and core connectivity hubs designed to deliver customized mission-critical solutions from concept to connection.



Scan the QR code to learn more about our Portland facility





Pittock Block
Exceptional Fiber Connectivity

Global Markets

The Oregon coast and Hillsboro serve as the main gateway to Asia-Pacific markets, offering direct access to seven subsea telecommunications cables. These cables provide high-capacity connectivity to China, Taiwan, Japan, Korea, Guam, Hawaii, New Zealand, Australia, and American Samoa.

U.S. Markets

The Pittock Block boasts one of the highest network densities in the Pacific Northwest and the highest in Oregon, with 16 fiber optic carriers and 179 additional service providers. Offering telecommunications routes in all directions, it serves as a centrally located, global-grade Internet Exchange with low average latency across major U.S. markets.